



# Declination of climate change on earth through adopting new conceptions and implementation

**Mai Mubarak Al saadi\***

*Department of Mechanical Engineering, Al-Musana College of Technology, Oman*

**\*Corresponding author:** Mai Mubarak Al saadi, Al-Musana College of Technology/Engineering department –Mechanical section, Sultanate of Oman, Oman.

**To Cite This Article:** Mai Mubarak Al saadi, Department of Mechanical Engineering, Al-Musana College of Technology, Oman. 2020 - 8(1). AJBSR.MS.ID.001221. DOI: [10.34297/AJBSR.2020.08.001221](https://doi.org/10.34297/AJBSR.2020.08.001221).

**Received:** 📅 March 03, 2020; **Published:** 📅 March 09, 2020

## Abstract

It is highly significant to have superior attention on climate changes phenomenon and other consequential aspects especially the massive alternations which started to appear over various locations of the world. It is quite evident that the main source of the greenhouse gases emission is resulting from the combustion of fossil fuels while producing electricity and from other power generation plants. Moreover, it is a major resource for several other process industries. Consequently, innumerable measures are adopted ranging from implementation of innovative technologies and reduction of emission gases, since the beginning of the current millennium to reduce the footprint of greenhouse gases on our climate. The existing new system of life is expected to promise the whole world that it would provide the same for the future generations by opting for sustainable development practices in order to avoid the future environmental disasters which could arise from adverse changes in the climate and other similar aspects. It is high time to focus on enhancement and growth of green areas by planting trees and afforestation efforts.

## Introduction

The universe is exposed to drastically changes in terms of cyclones, flooding, and extinction of diverse species of living organisms. Many of these approaches had been associated to industrial evolution and human activities. Many research work has been carried out to manifest the reasons beyond that and is linked to climate change phenomena because they conducted some experiments which approve the effect of long -wave radiation on the increment average temperature of earth surface which become warmer and warmer [Joseph Fourier,1824] and latterly an Irish scientist [ Tyndall, 1849 ] approved the capability of some gasses to absorb infrared power and they were carbon dioxide, methane, nitrous oxide and water vapor which have strong absorption on infrared radiation and those were named as greenhouse gases. Carbon dioxide is one of main greenhouse gases which are trapping heat in the atmosphere. American scientist [ Keeling,1957], who set up the station which could demonstrate atmospheric CO<sub>2</sub> concentration continues to increase, which is with accorded the temperature rising in instrument records. Thus, the existence

of greenhouse gases over world had been contributed to global warming. The global warming phenomena lead to increase the average surface temperature. Without the presence of greenhouse effect, temperature would about -18 C<sub>0</sub> (0 F). But at present time the average surface temperature reach to 15C (58 F) and that noted to the global average temperature rising at a rate of 0.70-0.75C<sub>0</sub> per years during 1910-2009 [Wen et al.,2011]. So the slight increment in surface temperature created different said environmental problems which led to call this phenomenon as climate change phenomena. One of example of climate change associated to greenhouse effect is ice cores melting, in addition, the rise of global average sea level and permafrost degradation [IPCC,2007]. Ice cores show a direct relationship between atmospheric temperature changes and changes in GHG Levels. During the past 10,000 years or so, atmospheric CO<sub>2</sub> concentrations have remained at close to the typical interglacial concentration of 280 parts per million (ppm). But with time passing, about 200 years ago things began to change. Concentrations of GHGs began to increase rapidly, primarily due to emissions from the combustion of fossilized carbon in coal, oil and

natural gas and, due to various land uses [1] and plus to different human activities and carbon dioxide is released from respiration process of human being.

However, climate model and first world climate conference [FWCC,1979] showed up the global average temperature will increase 1.5-4.5 C when the atmospheric CO<sub>2</sub> concentration double in the future. Naturally, only planting trees and other vegetation can help to reduce the amount of carbon dioxide in the atmosphere [2] because of carbon dioxide makes up 68% of the estimated total greenhouse gas emissions [3]. So, it is very important to observe air quality of certain areas where the concentration of warming global gases had started to rise. Especially where there is assemble of cars usage or human being. In the general, tracking the sources of greenhouse gases emission is very important and it is a worthy to measure carbon dioxide and other GHGs doses in surrounding areas of human being. Those areas will be studied in the term of measurement of CO<sub>2</sub> concentration either it has been exceeded the normal level or not yet. Other whom had related between tropic ocean and global atmosphere that was initiated in 1985 by World Climate Research Program which found evidence for aggravation of global warming by human activities, resulting in a series of environmental and ecological problems such as widespread melting of snow and ice, sea level rising and biodiversity decline.

### New Scope for research

From point of view, beside to GHGs, the scientists required to take many aspects in the account which can be as integral part of climate change phenomena. Firstly, people have habits to dump their wastes and debris into sea water from millennium and plus to oil leakage accidents, deep injection for carbon dioxide gas so new concept need to formulate and widen the reasons beyond the changes occurred. Also deforestation which aren't considered as a main reason for whole scenario and so they need to link it seriously to climate change phenomena and claim for the mitigation for whole the impact of human practices on the environment in the same time through reducing the consumption of materials and utilize some available materials within certain period. sticky no need to daily production of oil and natural gas through aware and conduct common compact for whole world so they can be peace with earth. Because there are massive products which are not required by human, but the countries continue to make without considering the impact of the production on the earth's component but they are dumping their products into markets with low and competitive prices. Annually, they clarified their business with sales and still the products are remained and undesirable for costumers. However, many polices, and rules need to be implemented toward the practices of many countries in order to control their activities which harsh the environment (Figure 1).

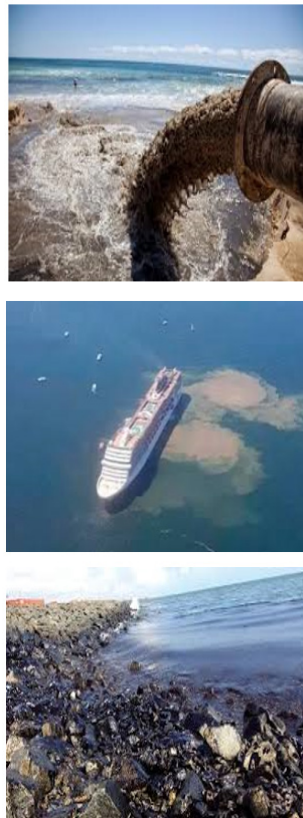


Figure 1: Dumping the waste into oceans and on their shores.

Furthermore, science must start to relate climate changes phenomena with religious and regional practice of each nation because of many civilization and giant villages had been disappears totally and being under land with their people. In addition, there are many tales and stories which were spread among us as result of disobey and no submission to our lord which could led to punish wrong-deed people, most of them in form of climate change phenomena such Norah flooding, pharaon's duration, duration of gale in time of Oad's nation which pay their life's totally. Many folks being buried under the deeper layers of land with villages which being dumped with huge amount of lava. Recently, there are numerous accidents such as tsunami, cyclones which are attacked countries without previous alert. Therefore, it is necessary to add

new concept or approach which need to be circulated among the nations, there is superpower force which have the whole authority to obey and submit otherwise there is the sentence or conviction in terms of angary's nature toward the sins which will be committed as it mention in historical stores and regional books. New approach of science can be applied to interpret the surrounding phenomena, so if there is possibility, new concept need can be added to manifest the reasons beyond the occurrence of cyclones, drought due to less rainfall for certain years then suddenly the precipitation is going on the land and they become full green areas. Fully, there is indication of rising of greenhouse gases over whole countries as it is reported from 1824 (Figure 2).



**Figure 2:** The nature attacks human being without previous alert.

Secondly, the researchers can compile data for seawater level and temperatures and the concentration GHGs for same period if there is possibility. No deny of contribution of GHGs in climate change phenomena so that will be approved through the observation for various phenomena have been occurred recently within certain years as we witness the development in our industrial field and increasing in the population.

## References

1. Mark D Symes (2016) The artificial leaf: recent progress and remaining challenges.
2. Josper vanderkolk, Judith Schaart, Iurens Sluyterman, Mike Smeenk, Iris Zahn (2016) Towards artificial leaves: Exploring the effects of surrounding ligand on a synthetic oxygen evolving Center.
3. (2012) Secrets of the first practical artificial leaf. American Chemical Society.